



# Ets-1 (phospho Ser251) Polyclonal Antibody

<b>Catalog No</b>	YP-Ab-01425
<b>Isotype</b>	IgG
<b>Reactivity</b>	Human;Mouse;Rat
<b>Applications</b>	IHC;IF;ELISA
<b>Gene Name</b>	ETS1
<b>Protein Name</b>	Protein C-ets-1
<b>Immunogen</b>	Synthesized phospho-peptide around the phosphorylation site of human Ets-1 (phospho Ser251)
<b>Specificity</b>	Phospho-Ets-1 (S251) Polyclonal Antibody detects endogenous levels of Ets-1 protein only when phosphorylated at S251.
<b>Formulation</b>	Liquid in PBS containing 50% glycerol, 0.5% BSA and 0.02% sodium azide.
<b>Source</b>	Polyclonal, Rabbit,IgG
<b>Purification</b>	The antibody was affinity-purified from rabbit antiserum by affinity-chromatography using epitope-specific immunogen.
<b>Dilution</b>	IHC: 1/100 - 1/300. ELISA: 1/40000.. IF 1:50-200
<b>Concentration</b>	1 mg/ml
<b>Purity</b>	≥90%
<b>Storage Stability</b>	-20°C/1 year
<b>Synonyms</b>	ETS1; EWSR2; Protein C-ets-1; p54
<b>Observed Band</b>	
<b>Cell Pathway</b>	Cytoplasm . Nucleus . Delocalizes from nucleus to cytoplasm when coexpressed with isoform Ets-1 p27. .
<b>Tissue Specificity</b>	Highly expressed within lymphoid cells. Isoforms c-ETS-1A and Ets-1 p27 are both detected in all fetal tissues tested, but vary with tissue type in adult tissues. None is detected in brain or kidney.
<b>Function</b>	disease:ETS is responsible for erythroblast and fibroblast transformation. The juxtaposition of the interferon and c-ETS-1 proto-oncogene may be involved in the pathogenesis of human monocytic leukemia. ,function:Transcription factor. ,PTM:Sumoylated on Lys-15 and Lys-227, preferentially by SUMO2; which inhibits transcriptional activity. ,PTM:Ubiquitinated; which induces proteasomal degradation. ,similarity:Belongs to the ETS family. ,similarity:Contains 1 ETS DNA-binding domain. ,similarity:Contains 1 PNT (pointed) domain. ,subunit:Interacts with MAF and MAFB (By similarity). Binds to DAXX. Interacts with UBE2I. ,
<b>Background</b>	This gene encodes a member of the ETS family of transcription factors, which are defined by the presence of a conserved ETS DNA-binding domain that recognizes the core consensus DNA sequence GGAA/T in target genes. These proteins function either as transcriptional activators or repressors of numerous



genes, and are involved in stem cell development, cell senescence and death, and tumorigenesis. Alternatively spliced transcript variants encoding different isoforms have been described for this gene.[provided by RefSeq, Jul 2011],

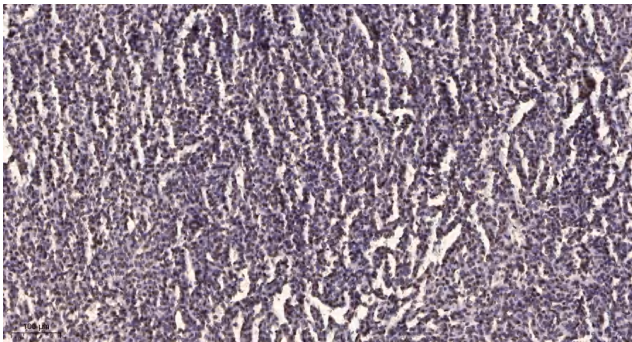
**matters needing attention**

Avoid repeated freezing and thawing!

**Usage suggestions**

This product can be used in immunological reaction related experiments. For more information, please consult technical personnel.

**Products Images**



Immunohistochemical analysis of paraffin-embedded human brain tumor. 1, Antibody was diluted at 1:200(4° overnight). 2, Tris-EDTA,pH9.0 was used for antigen retrieval. 3,Secondary antibody was diluted at 1:200(room temperature, 45min).